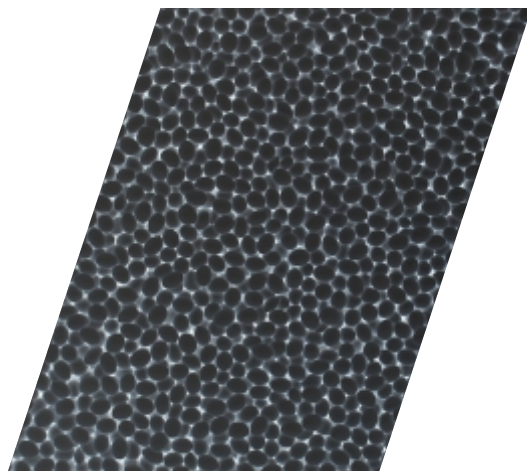




WOOD & FURNITURE  
**Division**



Adhesive  
Solutions

## THE COMPANY

Founded in 1995 by Antonio Sanz Lozano, QS is a company dedicated to the development, manufacture and marketing of adhesives and sealants for industrial and domestic use.

The experience of the founder, after a whole professional life in the world of adhesives, means that QS was born with a very clear vision of the project ahead.

Technology, quality, professional staff, R+D+i, concern for the environment, medium and long term business perspective, are words that define QS commitment; QS are the people that day by day make it a reality and that together with a great team of suppliers, work with the illusion and the commitment to offer our customers the best quality in product and service.

QS offers solutions in adhesives and sealants for the following markets:

- ✓Construction.
- ✓Glazing.
- ✓DIY and Hardware.
- ✓Footwear and Leather goods.
- ✓Wood and Furniture.
- ✓Packaging and Labeling.
- ✓Printing and Binding.
- ✓Nautica-Naval.
- ✓Cars and Bodywork.
- ✓Textile.

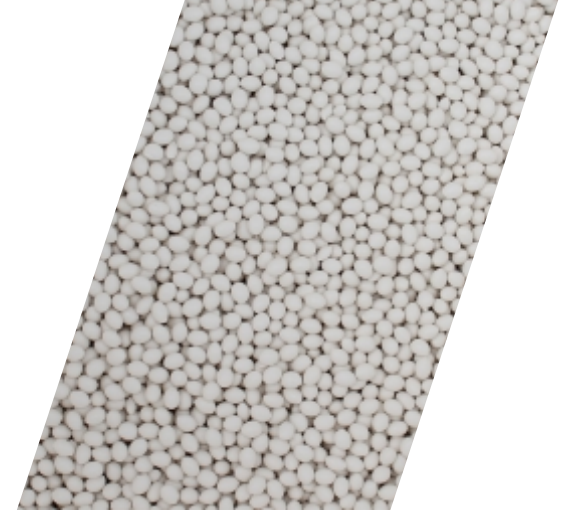
The attention to these sectors is not limited at present to the national market, since QS products are in great demand and can be found in more than 35 countries in the five continents.

40,000 m<sup>2</sup> plot, 15,000 m<sup>2</sup> of manufacturing and warehouse area, 800 m<sup>2</sup> of offices and 300 m<sup>2</sup> of laboratory make up QS headquarters.

It is worth mentioning the prize with which QS was awarded in March 2000: THE INTERNATIONAL TROPHY OF TECHNOLOGY AND QUALITY granted by the institution "New Millennium Award", Geneva, Switzerland, in its 23rd edition.

The QS R+D+i department is the heart of the company: a highly specialized team, equipped with the latest technical advances, guarantees the quality of our products, the continuous improvement of them and the development of new solutions for the market.

QS works every day to provide value and development for our customers, under a clear premise: respect for the environment and care for our planet. It is a shared responsibility in which companies must be an example to society. For this reason, the development of products that are increasingly in line with this QS sustainability commitment, as well as the correct management of waste within a dynamic of circular economy, are a priority objective of the company in its daily work. Translated with [www.DeepL.com/Translator](http://www.DeepL.com/Translator) (free version)



Adhesive  
Solutions





## QUALITY AS PRIORITY

Our ISO 9001 Quality System is audited and reviewed periodically, with "Continuous Improvement" being a basic principle of QS.

QS has been certified by Bureau Veritas, first certification entity in Spain, under ENAC and UKAS accreditation.

Through an audit that verifies compliance with the requirements of ISO 9001, the scope of the Management System implemented corresponds to: the design, manufacture, marketing and storage of adhesives, sealants and their accessories.

The rigorous process of obtaining and maintaining this certification shows our commitment to offering the market quality products and services and thus being able to access markets and customers who necessarily need their suppliers to be accredited with this type of certification.

In this way, the effort and dedication of the entire QS team to offer effective responses to the needs of its clients is internationally recognized and reaffirms its dedicated orientation to business excellence.





# HOT MELT ADHESIVES & CHEMICALS

## Wood & Furniture Industry

# TERMOLITE®

Advanced hot melt adhesives

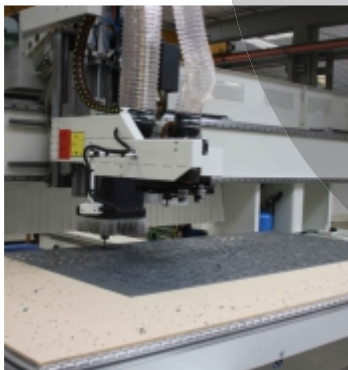
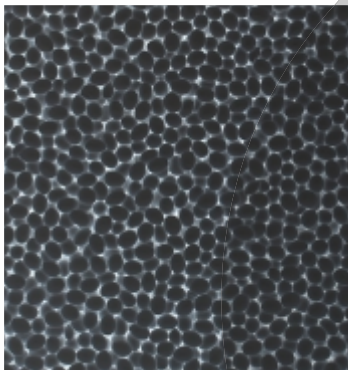
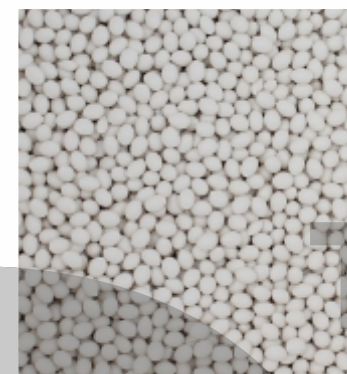
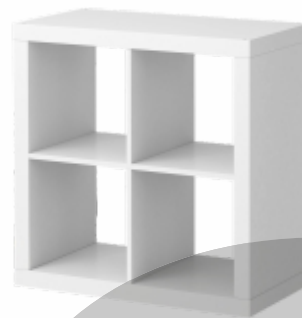


### APPLICATIONS:

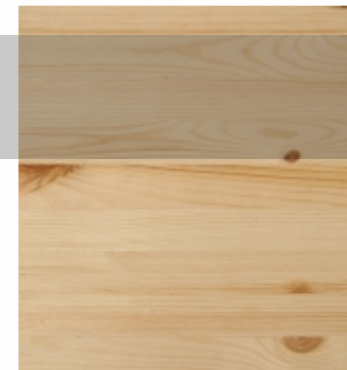
- ▶ Edgebanding and softforming.
- ▶ Profile wrapping.
- ▶ General use for carpentry and cabinets.
- ▶ Flat lamination.
- ▶ 3D lamination.
- ▶ Furniture assembling.
- ▶ Wood veneer.
- ▶ Lath board manufacturing.
- ▶ Furniture packaging.
- ▶ Upholstery.







**TERMOLITE**  
Advanced hot melt adhesives



# EDGEBANDING & SOFTFORMING

## Hot Melt Adhesive Range

**TERMOLITE**

Advanced hot melt adhesives

PRODUCT	DESCRIPTION	TECHNICAL DATA							APPLICATIONS							
		VISCOSITY [mPa·s]		SOFTENING POINT (°C)	OPEN TIME: (180°C)	BASE	COLOUR	APPLICATION TEMPERATURE (°C)	FEED SPEED (M/min.) (*)	Veneer	Solid wood	PVC, ABS, PP (with primer)	Resinated paper	Melamine	Low application temperature	Softforming
<b>P-15</b>	"Edges pre-gluing" HM: High performance, high viscosity	160°C: [75.000 - 95.000] 180°C: [40.000 - 60.000] 200°C: [30.000 - 40.000]	94 ± 5	Very short	EVA	Yellow	[170 - 200] °C	20-50	+	+	+	+	+			X
<b>TE-27</b>	"Edgebanding" HM: Yellowish (translucent film), high performance	190°C: [50.000 - 70.000] 200°C: [40.000 - 50.000] 210°C: [30.000 - 40.000]	88 ± 5	Medium	EVA	Yellow	[190 - 210] °C	15-40	X	X	X	X	X			
<b>TE-38</b>	"Edgebanding" HM: Short setting time, high performance. Can be used also as "softforming" hot melt adhesive.	190°C: [75.000 - 100.000] 200°C: [55.000 - 75.000] 210°C: [40.000 - 55.000]	105 ± 5	Short	EVA	Yellow	[190 - 210] °C	> 10	X	X	X	X	X		X	
<b>TE-40</b>	"Edgebanding" HM: Holz-Her Cartridges (Ø 63mm)	190°C: [75.000 - 100.000] 200°C: [50.000 - 70.000] 210°C: [40.000 - 60.000]	92 ± 5	Medium	EVA	Natural, White Brown, Black	[180 - 200] °C	12-18	X	X	X	X	X			
<b>TE-45</b>	"Edgebanding" HM: Manual machines	130°C: [110.000 - 130.000] 140°C: [70.000 - 90.000] 150°C: [45.000 - 65.000]	85 ± 5	Long	EVA	Natural, White Brown, Black	[120 - 150] °C	5-20	X		X	X	X	X		
<b>TE-47</b>	"Edgebanding" HM: High softening point	160°C: [190.000 - 210.000] 170°C: [110.000 - 130.000] 180°C: [80.000 - 100.000]	105 ± 5	Medium	EVA	Yellowish	[180 - 200] °C	15-40	X		X	X	X	X	X	
<b>TE-50</b>	"Edgebanding" HM: Holz-Her Cartridges (Ø 63mm)	190°C: [50.000 - 70.000] 200°C: [40.000 - 50.000] 210°C: [30.000 - 40.000]	88 ± 5	Medium	EVA	Yellow	[190 - 210] °C	15-40	X	X	X	X	X			
<b>TE-51</b>	"Edges pre-gluing" HM: Low viscosity	190°C: [15.000 - 20.000] 200°C: [11.000 - 15.000] 210°C: [9.000 - 12.000]	98 ± 5	Very short	EVA	Natural	[170 - 200] °C	20-50	+	+	+	+	+			X
<b>TE-60</b>	"Edgebanding" HM: "Low application temperature"	160°C: [70.000 - 90.000] 170°C: [50.000 - 70.000] 180°C: [40.000 - 60.000]	84 ± 5	Medium	EVA	Natural, White Brown, Black	[160 - 190] °C	5 - 40	X		X		X	X		
<b>TE-67</b>	"Softforming" HM: High viscosity, very short setting time	190°C: [180.000 - 220.000] 200°C: [130.000 - 170.000] 210°C: [100.000 - 130.000]	111 ± 5	Very short	EVA	Natural, White Brown, Black	[190 - 210] °C	20-40	X	X	X		X		X	
<b>TE-67 LV</b>	"Softforming" HM: Very short setting time	190°C: [80.000 - 105.000] 200°C: [62.000 - 82.000] 210°C: [45.000 - 65.000]	104 ± 5	Very short	EVA	Natural, White Brown, Black	[190 - 210] °C	> 15	X	X	X	X	X		X	
<b>TE-80</b>	"Universal Edgebanding" HM: High speed lines	190°C: [90.000 - 120.000] 200°C: [70.000 - 90.000] 210°C: [50.000 - 70.000]	96 ± 5	Short	EVA	Natural, White Brown, Black	[190 - 210] °C	20-50	X		X		X			
<b>TE-81</b>	"Universal Edgebanding" HM: Medium speed lines. High performance.	190°C: [75.000 - 100.000] 200°C: [50.000 - 70.000] 210°C: [40.000 - 60.000]	92 ± 5	Medium	EVA	Natural, White Brown, Black	[190 - 210] °C	15-40	X	X	X	X	X			
<b>TE-85</b>	"Universal Edgebanding" HM: Medium/high speed lines. Good performance.	190°C: [80.000 - 120.000] 200°C: [70.000 - 90.000] 210°C: [50.000 - 70.000]	96 ± 5	Short	EVA	Natural	[190 - 210] °C	20-50	X	X	X	X	X			
<b>TE-95</b>	HM "Sealing / reinforcement board edges"	180°C: [26.000 - 32.000] 190°C: [20.000 - 26.000] 200°C: [14.000 - 20.000]	115 ± 5	Very short	EVA	Natural	[190 - 210] °C	20-50								
<b>A-90</b>	"Edgebanding" HM Holz-Her Cartridges (Ø63mm). High temperature resistance. Excellent performance. Transparent.	180°C: [45.000 - 55.000] 190°C: [35.000 - 45.000] 200°C: [25.000 - 35.000]	130 ± 5	Very short	APAO	Transparent	[180 - 200] °C	20-50	X	X	X	X	X		X	
<b>A-121</b>	"Edgebanding" HM: High heat resistance, high performance	180°C: [55.000 - 70.000] 190°C: [40.000 - 55.000] 200°C: [30.000 - 40.000]	130 ± 5	Very short	APAO	Natural	[180 - 200] °C	20-40	X	X	X	X	X		X	
<b>A-122</b>	"Edgebanding" HM: Low viscosity, high heat resistance, excellent performance	180°C: [45.000 - 55.000] 190°C: [35.000 - 45.000] 200°C: [25.000 - 35.000]	130 ± 5	Medium	APAO	Yellowish	[180 - 200] °C	15-40	X	X	X	X	X			
<b>A-123</b>	"Edgebanding" HM: high heat resistance, good performance	180°C: [55.000 - 75.000] 190°C: [40.000 - 55.000] 200°C: [25.000 - 40.000]	135 ± 5	Medium	APAO	Natural	[180 - 200] °C	20-40	X	X	X	X	X		X	

(\*) FEED SPEED: Depending on the room and material temperatures and on the press time.

+ : Preglued. X :We recommend to test adhesion on the substrates before use.



# PROFILE WRAPPING

## Hot Melt Adhesive Range

**TERMOLITE<sup>®</sup>**

Advanced hot melt adhesives

PRODUCT	DESCRIPTION	TECHNICAL DATA							APPLICATIONS				
		VISCOSITY [mPa·s]		SOFTENING POINT (°C)	OPEN TIME: (180°C)	BASE	COLOUR	APPLICATION TEMPERATURE (°C)	FEED SPEED (M/min.) (*)	Wood Veneer	Paper	PVC	Melamine paper
TE-10	"Profile wrapping" HM: (Wood veneer)	190°C: [12.000 - 16.000] 200°C: [8.500 - 14.500] 210°C: [6.500 - 10.500]	84 ± 5	Long	EVA	Natural	[180 - 210] °C	> 20	X				
TE-11	"Profile wrapping" HM: (Wood veneer)	190°C: [12.000 - 18.000] 200°C: [9.000 - 13.000] 210°C: [7.000 - 11.000]	86 ± 5	Long	EVA	Natural	[190 - 210] °C	> 20	X				
P-14	"Profile wrapping" HM: High viscosity, high performance (Wood veneer)	190°C: [23.000 - 29.000] 200°C: [17.000 - 23.000] 210°C: [13.000 - 19.000]	84 ± 5	Medium	EVA	Yellow	[190 - 220] °C	20 - 60	X	X		X	X
TE-17	"Profile wrapping" HM: (Paper)	180°C: [8.000 - 10.500] 190°C: [6.000 - 8.000] 200°C: [5.000 - 6.000]	88 ± 5	Long	EVA	Natural	[160 - 200] °C	20 - 40	X	X		X	X
TE-23	"Profile wrapping" HM: (Paper)	180°C: [6.000 - 10.000] 190°C: [4.000 - 8.000] 200°C: [3.500 - 5.500]	83 ± 5	Medium	EVA	Natural	[160 - 210] °C	20 - 60	X	X		X	X
P-18	"Profile wrapping" HM: High application temperature (PVC). Specially for PP bonding.	140°C: [25.000 - 45.000] 150°C: [20.000 - 30.000] 160°C: [15.000 - 20.000]	76 ± 5	Long	EVA	Yellow	[140 - 160] °C	40 - 100	X	X	X	X	X
P-20	"Profile wrapping" HM: Low application temperature (PVC)	140°C: [25.000 - 45.000] 150°C: [20.000 - 30.000] 160°C: [15.000 - 20.000]	75 ± 5	Long	EVA	Yellow	[140 - 160] °C	20 - 60	X	X	X	X	X
P-21	"Profile wrapping" HM: High performance (Paper)	180°C: [6.000 - 10.000] 190°C: [4.000 - 8.000] 200°C: [3.500 - 5.500]	80 ± 5	Long	EVA	Yellow	[180 - 210] °C	20 - 60	X	X		X	X
P-24	"Profile wrapping" HM: High performance. Medium and high speed machines (Paper). 360° wrapping machine.	180°C: [9.000 - 10.000] 190°C: [7.000 - 8.000] 200°C: [6.000 - 7.000]	90 ± 5	Medium	EVA	Yellow	[180 - 210] °C	20 - 60	X	X		X	X
P-25	"Profile wrapping" HM: High speed machine (Paper)	180°C: [8.000 - 9.000] 190°C: [7.000 - 8.000] 200°C: [6.000 - 7.000]	80 ± 5	Short	EVA	Yellow	[180 - 210] °C	20 - 60	X	X		X	X
A-111	"Profile wrapping" HM: High heat resistance, high performance	180°C: [9.000 - 12.000] 190°C: [7.000 - 9.000] 200°C: [5.000 - 7.000]	135 ± 5	Long	APAO	Yellowish	[180 - 200] °C	15 - 50	X	X	X	X	X
A-112	"Profile wrapping" HM: High heat resistance. Excellent performance.	180°C: [9.000 - 12.000] 190°C: [7.000 - 9.000] 200°C: [5.000 - 7.000]	140 ± 5	Long	APAO	Slightly yellow	[180 - 200] °C	15 - 50	X	X	X	X	X
A-150	"Profile wrapping" HM: High heat resistance. Excellent performance.	180°C: [8.000 - 11.000] 190°C: [6.000 - 8.000] 200°C: [4.000 - 6.000]	125 ± 5	Long	APAO	Slightly yellow	[180 - 200] °C	15 - 50	X	X	X	X	X
A-180	"Profile wrapping" HM: High heat resistance. Good performance.	180°C: [8.000 - 10.000] 190°C: [6.000 - 8.000] 200°C: [4.000 - 6.000]	130 ± 5	Long	APAO	Slightly yellow	[180 - 200] °C	15 - 50	X	X	X	X	X
A-300 RPO	"Profile wrapping" HM: High heat resistance, excellent adhesion to multiple materials.	180°C: [37.000 - 43.000] 190°C: [26.000 - 32.000] 200°C: [17.000 - 23.000]	110 ± 5	Medium	APAO	Slightly yellow	[180 - 200] °C	15 - 50	X	X	X	X	X

(\*) FEED SPEED: Depending on the room and material temperatures and on the press time.

X : We recommend to test adhesion on the substrates before use.



# SOLVENT FREE ADHESIVES & GLUES

## Adhesive Range: PVA - EPI - PU

DISPERTEC®

Water based adhesives

PRODUCT	DESCRIPTION	TECHNICAL DATA				APPLICATIONS						
		VISCOSITY (Cps a 23°C)	OPEN TIME (minutes)	WHITE POINT (°C)	pH	Assembly	Veneerings	Striped Wood	Blockboard	Post-forming, Sub-forming	PVC lining	Others
UNIVERSAL	PVA glue. General-purpose. High viscosity.	15000 - 20000	10 - 15	5 - 7	6 - 8	X	X					
MX-4325	PVA glue. General-purpose. Transparent film.	19000 - 23000	8 - 10	5 - 8	3 - 5	X	X					X
MX-4329	PVA glue. General-purpose. Medium-long open time.	15000 - 18000	10 - 12	5 - 7	4,5 - 6,5	X	X					
MX-5332	PVA glue. General-purpose. Good performance.	10000 - 15000	8 - 12	5 - 7	4,5 - 6,5	X	X		X			
MX-5336	Fast PVA glue. Quick setting. High initial grip.	10000 - 15000	5 - 7	5 - 7	4,5 - 6,5	X	X	X	X			
MX-5135	PVA glue. Veneered veneer in membrane press.	4000 - 5000	6 - 8	8 - 10	3 - 5							X
MX-5337	PVA glue. Bonding of metal sheets on armored doors.	10000 - 15000	8 - 10	5 - 7	4 - 6							X
MX-5250	PVA glue. Postformed and high pressure laminates. High initial grip.	10000-15000	5 - 7	8 - 10	3 - 5					X		
ME-5338	PVC laminate on wood.	8000 - 12000	4 - 5	0 - 2	7 - 9						X	
MX-4330	Tiempo abierto largo. Uso general. Humidity resistance EN-204 D2.	10000 - 15000	15 - 20	3 - 5	3 - 5	X	X	X	X			X
MX-4330-RW	Long open time. General-purpose. Humidity resistance EN-204 D3, D4 with DESMOFLEX WB. Alternative to urea glues.	10000 - 15000	13 - 15	3 - 5	1 - 3	X	X					X
MX-5235-RW	General-purpose. Resistance to humidity EN-204 D3, D4 with DESMOFLEX WB.	10000 - 15000	7 - 11	3 - 5	1 - 4	X	X	X				X
MX-5235-RWR	Quick setting Resistance to humidity EN-204 D3, D4 with DESMOFLEX WB.	10000 - 15000	5 - 6	5 - 7	1 - 4	X	X	X				X
MX-5120	Earing on automatic nailing machine.	100 - 300	10 - 15	6 - 8	3 - 5							X
ME-7340	EPI adhesive. Manufacture of thick parquet, windows, doors, etc ... Moisture resistance EN-204, D4 with DESMOFLEX 7070.	7000 - 15000	5 - 10	3 - 5	6 - 8	X	X	X	X			X
ME-7370	EPI adhesive. Manufacture of fine parquet, windows, doors, etc ... Moisture resistance EN-204, D4 with DESMOFLEX 7070.	4000 - 9000	8 - 15	3 - 5	6 - 8	X	X	X	X			X
ME-7390	EPI adhesive. Lamination with wood veneer. Resistance to humidity EN-204, D4 with DESMOFLEX 7070.	4000 - 8000	6 - 12	3 - 5	6 - 8	X	X	X	X			X
ME-7331-AV	EPI adhesive. Gluing of supports in the manufacture of raised floors ... Moisture resistance EN-204, D4 with DESMOFLEX 7070.	15000 - 20000	10 - 15	0 - 3	5 - 7							X
ME-6337-AV2	Adhesive for the manufacture of technical floors and armored doors.	20000 - 25000	5 - 10	5 - 8	7 - 9							X
S-3000	Flame retardant, fire doors.	15000 - 20000	5 - 7	5 - 8	10 - 12							X
UV-4233-E	Bonding of PVC foils in membrane press. Great initial grip.	800 - 1100	---	5	6 - 9							X
UV-5130-E	Bonding of PVC foils in membrane press. High performance.	800 - 1100	---	5	6 - 9							X
UV-8230 1K	Bonding of PVC sheets in monocomponent membrane press.	800 - 1100	---	5	6 - 9							X
UV-9230 1K	Bonding of PVC sheets in monocomponent membrane press.	2200 - 2700	---	5	6 - 8							X

# SOLVENT BASE ADHESIVES & GLUES

## Adhesive Range: Polychloroprene & Polyurethane



**SUPERTEC**

Contact adhesives

PRODUCT	DESCRIPTION / APPLICATIONS	TECHNICAL DATA				
		VISCOSITY (Cps a 23°C)	OPEN TIME (minutes)	TEMPERATURE RESISTANCE (°C)	DRYING TIME (minutes)	APPLICATION MODE
<b>EXTRA</b>	General use. High temperature resistance. Bonding wood, metal, rubber, etc...	2000 - 2500	40 - 60	80 - 100	15 - 20	Spatula, brush, roller
<b>UNIVERSAL</b>	General use. Good open time. Bonding wood, metal, rubber, paper, cardboard, etc...	2900 - 3500	> 120	60 - 70	15 - 20	Spatula, brush, roller
<b>5400</b>	Bonds formica or plastic laminated on chipboard or DM, when manufacturing kitchen tops. Upholstery, high temperature resistance. Bonding wood, plastic laminates, foam, fabrics, etc...	< 300	30 - 40	90 - 100	15 - 20	Spray gun
<b>9025 F</b>	Upholstery, very long open time. Bonding wood, metal, foam, fabrics, etc...	< 200	> 24 hours	50 - 60	5 - 10	Spray gun

**PLASTIPOL**

Polyurethane adhesives

PRODUCT	DESCRIPTION / APPLICATIONS	TECHNICAL DATA			
		VISCOSITY (Cps a 23°C)	OPEN TIME (minutes)	TEMPERATURE RESISTANCE (°C)	SYSTEM
<b>333</b>	100% solid one-component polyurethane adhesive. High resistance to water D4 (EN-204). Indoor and outdoor use. Bonding of wood, metals, plastics, cement, ceramics, foams, etc ... Foaming effect.	8000 - 15000	20 - 30	> 100	One component
<b>333 / 1</b>	One-component polyurethane adhesive. Short open time High resistance to water D4 (EN-204). Indoor and outdoor use. Partitions, sandwich, thermal insulation, wood carpenteria, Gun application, rollers.	10000 - 15000	5 - 15	> 100	One component
<b>333 / 2</b>	One component polyurethane adhesive. High water resistance: D4 (EN-204). High viscosity. Indoor and outdoor use. Partitions, sandwich, thermal insulation, wood...	15000 - 25000	60 - 90	> 100	One component
<b>333 Thixo</b>	100% solid one-component polyurethane adhesive. High water resistance D4 (EN-204). Indoor and outdoor use. Glued wood, metals, plastics, cement, ceramics, foams, etc ...	Thixotropic	5 - 10	> 100	One component
<b>444</b>	One component polyurethane adhesive 100% solid, High resistance temperature according EN-204 European Standard, Stress group D4, Indoor and outdoor use. Bonding wood, metal, plastic, cement, ceramic, foam, etc... and moisture (also to water immersion).	2100 - 2800	30 - 50	> 100	One component
<b>555</b>	Fast setting. One component polyurethane adhesive 100% solid, High resistance to temperature and moisture (also to water immersion) according EN-204 European Standard, Stress group D4, Indoor and outdoor use. Bonding wood, metal, plastic, cement, ceramic, foam, etc... Sandwich panels.	2000 - 3000	14 - 20	> 100	One component
<b>999 Thixo</b>	Transparent. One component polyurethane adhesive 100% solid, High resistance to temperature and moisture (also to water immersion) according EN-204 European Standard, Stress group D4, Indoor and outdoor use. Bonding wood, metal, plastic, cement, ceramic, foam, etc... Snadwich panels.	Thixotropic	5 - 10	> 100	One component
<b>SUPER SP</b>	Two component polyurethane adhesive 100% solid, High resistance to temperature and moisture (also to water immersion) according EN-204 European Standard, Stress group D4, Indoor and outdoor use. Bonding wood, metal, plastic, cement, ceramic, foam, etc... Snadwich panels.	25000 - 35000	30 - 40*	> 100	Two component

(\*) Pot life with DESMOFLEX DF.

**OTHERS**

Adhesives, sealants & complements

ADHESIVES / SEALANTS	DESCRIPTION / APPLICATIONS
<b>TERMOLITE TE-300</b>	Universal transparent thermofusible adhesive, especially suitable for fast gluing with application system with injection guns. This product is suitable for use in a variety of industries: footwear, upholstery, electronics, packaging, wood, etc ... Application temperature of the hot mel gun: 170-210°C
<b>DISPERTEC KIT</b>	Water based assembly adhesive. Indoor and outdoor use. Bonding wood, metal, concrete, rigid PVC, ceramics, etc ... .High strength. Fast drying.
<b>SUPERTEC KIT INSTANT</b>	Assembly adhesive solvent based. Indoor and outdoor use. Bonding wood, metal, concrete, rigid PVC, ceramics, etc ... .High strength. Fast drying.
<b>SUPERTEC CIANO M</b>	Cyanoacrylate instant adhesive. High viscosity. Particularly porous materials, wood, leather, textiles, etc ...
<b>DISPERTEC CONTACT</b>	Water-based contact adhesive, general purpose. Bonding of wood, leather, cardboard, textiles, etc ... Application to brush, spatula or roller.
<b>TECNOFOAM</b>	One component polyurethane foam, self-expandable. It is optimal for insulating, filling, fixation, anchorage, DIY, etc...
<b>DISPERTEC M-6</b>	Special water based acrylic sealer for wood. Closets, baseboards, stairs... Quick drying. Paintable and sandable.
<b>TECNOSIL N-80</b>	One component neutral silicone RTV sealant. It is suitable for the most demanding sealings such as internal and external woodwork, expansion joints, perimeter joints, glazing, wood, etc...
<b>TECNOSIL N-90</b>	One component neutral silicone RTV sealant. Specially formulated for fixing mirrors.
<b>TECNOPIR P-40</b>	One component polyurethane adhesive+sealant, Suitable for all types of materials such as concrete, brick, marble, tiles, ceramics, fiber-cement, galvanized steel, iron, aluminum, wood, etc ... Installation of parquet. Paintable.
<b>EMAX MS-50</b>	One component silane-modified polymers adhesive and sealant. Suitable for all types of materials such as concrete, brick, marble, tiles, ceramics, fiber-cement, galvanized steel, iron, aluminum, wood, etc....
<b>EMAX MS-80</b>	Adhesive based on silane modified monocomponent polymers. Good adhesion on many materials used in construction. Installation of parquet.
<b>EMAX MS-55</b>	HIGH TACK Adhesive based on MS polymers, monocomponent. High initial and final strength. Suitable for all types of materials.
ACCESORIES	DESCRIPTION / APPLICATIONS
<b>ACTIVADOR CIANO</b>	Accelerates the polymerization rate of Supertec Ciano on acidic surfaces.
<b>DESMOFLEX WB</b>	Crosslinker for water-based adhesives. Improves heat and misture resistance.
<b>DESMOFLEX DF</b>	Crosslinker for Plastipol Super Polyurethane adhesives. It improves the temperature and humidity resistance.
<b>DESMOFLEX 7070</b>	Hardener for EPI adhesives.
<b>DISOLVER UNIVERSAL</b>	Solvent for paints, lacquers and varnishes, viscosity adjusting, cleaning equipment, etc ....
<b>DISOLVER PU</b>	Solvent for varnishes and PU 1 or 2 components.
<b>TECNOCLEAN</b>	Specially developed to the drainage and cleaning of melting tanks, nozzles, hosepipes of applicator systems.
<b>PLASTIPOL PRIMER 800</b>	Edge PVC primer.

# PACKAGING

## Hot Melt Adhesive Range

**TERMOLITE**

Advanced hot melt adhesives

PRODUCT	DESCRIPTION	TECHNICAL DATA							APPLICATIONS				
		VISCOSITY [mPa·s]	SOFTENING POINT (°C)	OPEN TIME: (180°C)	BASE	COLOUR	APPLICATION TEMPERATURE (°C)	FEED SPEED (boxes/h.) (*)	Assembly of boxes FRUIT & VEGETABLE	Assembly of boxes SMALL CASES	Assembly of boxes WRAP-AROUND	Packing of WARM PRODUCTS	Assembly of boxes FROZEN CASES
P-50	"Carton closing" HM: Long open time.	160°C: [1.600 - 2.000] 170°C: [1.200 - 1.600] 180°C: [900 - 1.200]	105 ± 3	Long	EVA	Yellow	[160 - 190] °C	< 1400	X				
P-50 H	"Carton closing" HM: Medium open time.	160°C: [1.500 - 1.900] 170°C: [1.100 - 1.500] 180°C: [800 - 1.100]	108 ± 3	Medium	EVA	Yellow	[160 - 190] °C	< 1600	X				
P-50 HR	"Carton closing" HM: Short open time.	160°C: [1.500 - 1.900] 170°C: [1.100 - 1.500] 180°C: [800 - 1.100]	112 ± 3	Short	EVA	Yellow	[160 - 190] °C	< 1800	X			X	
P-60 H	"Carton closing" HM: Low ambient temperatures.	160°C: [2.000 - 2.500] 170°C: [1.500 - 2.000] 180°C: [1.000 - 1.500]	105 ± 5	Short	EVA	Yellow	[160 - 190] °C	< 1600	X				
P-51 H	"Carton closing" HM: Low viscosity, medium open time.	140°C: [1.600 - 2.400] 160°C: [800 - 1.200] 180°C: [500 - 800]	105 ± 3	Medium	EVA	Yellow	[140 - 180] °C	< 1600	X	X			
P-51 HR	"Carton closing" HM: Low viscosity, short open time.	140°C: [1.600 - 2.400] 160°C: [800 - 1.200] 180°C: [500 - 800]	108 ± 3	Short	EVA	Yellow	[140 - 180] °C	< 1800	X	X		X	
A-135 M	"Carton closing" HM: High thermal stability, odorless, high performance.	160°C: [1.500 - 1.900] 170°C: [1.100 - 1.500] 180°C: [800 - 1.100]	110 ± 5	Short	meO-PO	Transparent	[160 - 190] °C	< 1600	X	X	X		X
A-136 M	"Carton closing" HM: Good thermal stability, high performance.	160°C: [1.500 - 1.900] 170°C: [1.100 - 1.500] 180°C: [850 - 1.050]	105 ± 5	Short	meO-PO	Ligth yellow	[160 - 190] °C	< 1600	X	X	X		X
A-140 M	"Carton closing" HM: High thermal stability, odorless, excellent performance. Very short open time.	160°C: [1.500 - 1.900] 170°C: [1.100 - 1.500] 180°C: [800 - 1.100]	110 ± 5	Very short	meO-PO	Transparent	[160 - 190] °C	< 1800	X	X	X		X
A-160 M	"Carton closing" HM: High thermal stability, odorless, excellent performance. Difficult substrates.	160°C: [1.800 - 2.200] 170°C: [1.400 - 1.800] 180°C: [1.000 - 1.400]	105 ± 5	Medium	meO-PO	Transparent	[160 - 190] °C	< 1500	X	X	X		X

(\*) FEED SPEED: Depending on the room and material temperatures and on the press time.



# UPHOLSTERY & MATTRESSES ADHESIVES

## Adhesive Range

**SUPERTEC**  
Contact adhesives

**DISPERTEC**  
Water-based adhesives

**TERMOLITE**  
Advanced hot melt adhesives

	PRODUCT	DESCRIPTION	FEATURES	PACKAGING	SYSTEM
<b>SOLVENT BASE</b>	<b>SUPERTEC 9025 F</b> ● ● ●	Synthetic rubber solvent base adhesive, low viscosity, for spray application. General use, excellent adhesion on foams, fabrics, woods, yarn waste,...	Good heat resistance / Long open time / Blue color / Low viscosity / Fast drying.	20 L , 200 L	
	<b>SUPERTEC UNIVERSAL</b> ● ●	Synthetic rubber solvent base adhesive, for manual application. General use, excellent adhesion on foams, fabrics, woods, yarn waste,...	Good heat resistance / Long open time / Semitransparent color / Medium viscosity / Normal drying.	20 L , 200 L	
	<b>SUPERTEC EXTRA</b> ●	High performance synthetic rubber solvent base adhesive, for manual application. Excellent adhesion on foams, fabrics, woods, yarn waste,...	Excellent heat resistance / Short open time / High viscosity / Fast drying.	20 L , 200 L	
	<b>SUPERTEC 5400</b> ● ● ●	Low viscosity solvent base contact adhesive (synthetic rubber) for spray application. High performance. Excellent adhesion on foams, fabrics, woods, yarn waste,...	Excellent heat resistance / Short open time / Color Red / Low viscosity / Fast drying.	20 L , 200 L	
<b>WATER BASE</b>	<b>DISPERTEC CONTAK</b> ● ●	Synthetic water contact adhesive, for manual application. General use, excellent adhesion on foams, fabrics, woods, yarn waste,...	Good heat resistance / Short open time / Transparent once dry / Without solvents / Fast drying.	25 KG	
	<b>DISPERTEC CB-2120</b> ● ● ●	One-component water-based contact adhesive for spray application and general use. Excellent adhesion on foams, fabrics, woods, yarn waste,...	Good heat resistance / Long open time / Semitransparent color / Medium viscosity / Normal drying.	25 KG	
	<b>DISPERTEC CB-5125</b> ● ● ●	Two-component water-based contact adhesive, with catalyst, quick drying and spray application for general use. Excellent adhesion on foams, fabrics, woods, yarn waste,... CATALYST CB	Good heat resistance / Short open time / Transparent once dry / Solvent free / Fast drying / 2 Components.	25 KG	
	<b>CATALIZADOR CB</b> Catalyst	Catalyst for specific use with Dispertec CB 5125, mixing ratio in spray nozzle: 8.5 kg - Adhesive / 1,5 kg - Catalyst.	Water base / Accelerates the drying of the adhesive / Allows fast working cycles.	25 KG	
<b>HOT MELT</b>	<b>TERMOLITE TE-125</b> ● ●	Rubber based hot melt adhesive for general use. Excellent adhesion on foams, fabrics, woods, yarn waste,...	Permanent open time / Yellow / Good heat resistance / Without solvents	Pillows / Box 15 KG	
	<b>TERMOLITE TE-125 HV</b> ● ●	Rubber based hot melt adhesive for general use. Excellent adhesion on foams, fabrics, woods, yarn waste,...	Permanent open time / Yellow / Good heat resistance / High viscosity / Without solvents	Pillows / Box 15 KG	
	<b>TERMOLITE TE-140</b> ● ●	APAO base hot melt adhesive . High performance. Excellent adhesion on foams, fabrics, woods, yarn waste,...	Excellent heat resistance / Long open time / Translucent color.	Pillows / Box 15 KG	
	<b>TERMOLITE P-28 T</b> ○	Hot melt EVA based hot melt adhesive for pocket spring bonding for the manufacture of mattress.	Good heat resistance / Short open time / Yellowish color / Low viscosity.	Bag 20 KG	

- Upholstered chairs, armchairs and furniture
- Layers lamination. MATTRESSES
- Foams bonding
- Pocketed spring bonding. MATTRESSES

**TECHNICAL  
SUPPORT**  
**+34 966 735 506**

QS puts at your disposal a technical assistance service where you can resolve your doubts about the products and their use, as well as any question about the company.

QS wants to be close to its customers and thus guarantee the proper functioning of its products.

TERMOLITE®  
Hot Melt Adhesives

SUPERTEC®  
Contact Adhesives

PLASTIPOL®  
Polyurethane Adhesives

DISPERTEC®  
Water Based Adhesives

TECNOSIL®  
Silicon Sealants

TECNOPUR®  
Polyurethane Adhesives & Sealants

TECNOFOAM®  
Polyurethane Foams

EMAX®  
MS Polymer Adhesives & Sealants



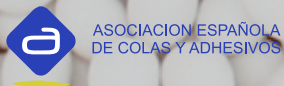
NEW MILENIUM AWARD  
FOR TECHNOLOGY AND QUALITY  
Geneva, Switzerland



**AIDIMME**  
INSTITUTO TECNOLÓGICO  
METALMECANIC, WOOD, FURNITURE, PACKAGING & AFFINERS  
TECHNOLOGICAL INSTITUTE



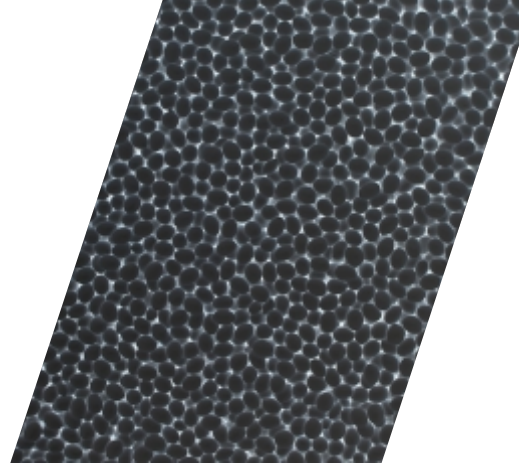
**INESCOP**  
FOOTWEAR TECHNOLOGICAL  
INSTITUTE



ASOCIACION ESPAÑOLA  
DE COLAS Y ADHESIVOS







**YEARS**



**For sure.™**

**qs-adhesivos.es**



QS ADHESIVES & SEALANTS, S.L. Camino de la Sierra, 34 - 03370 REDOVAN (Alicante) SPAIN  
T: +34 966 735 506 F: + 34 966 735 564 info@qs-adhesivos.es